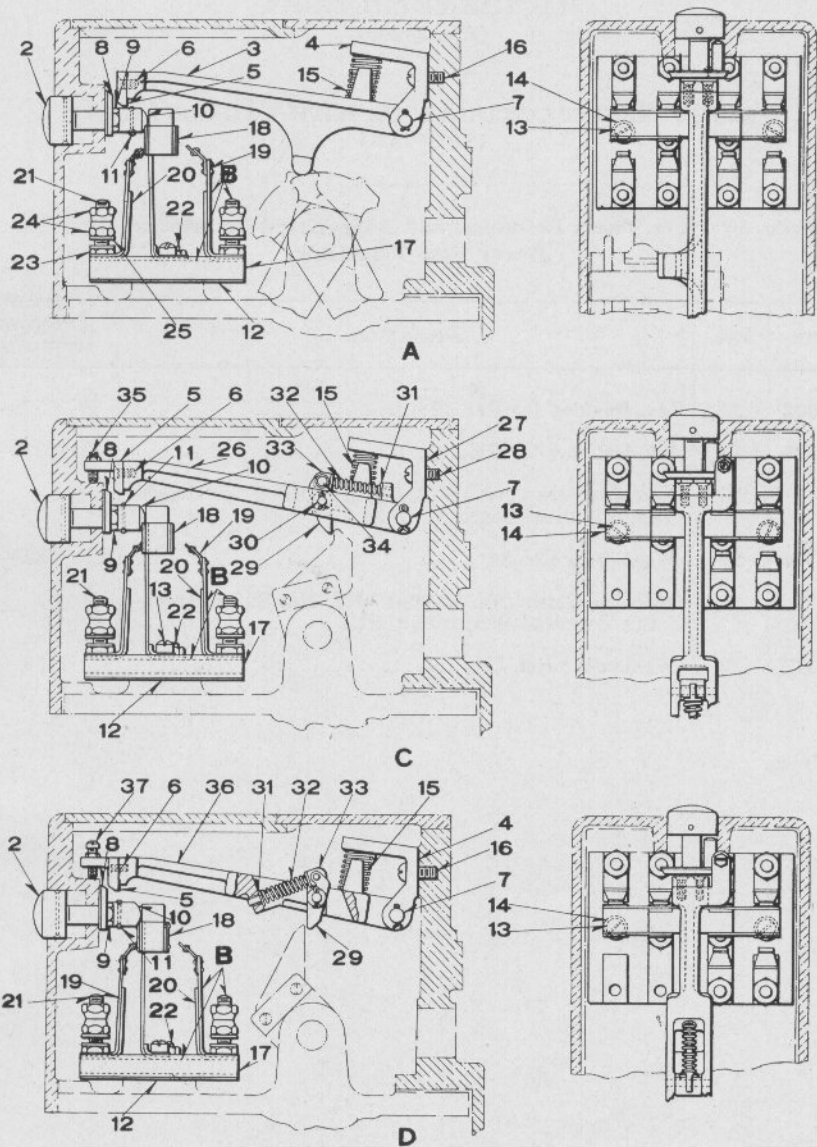


UNION SWITCH & SIGNAL CO.



PUSH BUTTON CIRCUIT CONTROLLERS

UNION SWITCH & SIGNAL CO.

STYLE "S-S" ELECTRO-MECHANICAL INTERLOCKING
MACHINE DETAIL PARTS

PUSH BUTTON CIRCUIT CONTROLLERS

Order by Plate, Piece, Reference and Abbreviated Description Given in
Heavy Face Type Only

Piece	Ref.	Description	Drawing Reference
93633	A	Stick Push Button Circuit Controller, complete with Contact Spring Board and Latch Arm, used with Cams, Refs. 13, 14, 16 and 17, Plate A-1020. (Specify Contact Spring Board required, referring to Refs. B, Ba, Bb, Bc, Bd or Be).....	B-9918-20
70097	B	Contact Spring Board, complete with one normally open Contact, Insulation Ref. 12, two Screws Ref. 13 and Washers Ref. 14. (Without Push Button and Latch Arm).....	B-9918-20
	Ba	Contact Spring Board, complete with two normally open Contacts, Insulation Ref. 12, two Screws Ref. 13 and Washers Ref. 14. (Without Push Button and Latch Arm).....	B-9918-20
70099	Bb	Contact Spring Board, complete with two normally open and two normally closed Contacts, Insulation Ref. 12, two Screws Ref. 13, and Washers Ref. 14. (Without Push Button and Latch Arm).....	B-9918-20
	Bc	Contact Spring Board, complete with two normally open and one normally closed Contacts, Insulation Ref. 12, two Screws Ref. 13, and Washers Ref. 14. (Without Push Button and Latch Arm).....	B-9918-20
	Bd	Contact Spring Board, complete with one normally open and two normally closed Contacts, Insulation Ref. 12, two Screws Ref. 13, and Washers Ref. 14. (Without Push Button and Latch Arm).....	B-9918-20
70098	Be	Contact Spring Board, complete with one normally open contact and one normally closed Contact, Insulation Ref. 12, two Screws Ref. 13 and Washer Ref. 14. (Without Push Button and Latch Arm)....	B-9918-20
	C	Stick Push Button Circuit Controller, complete with Contact Spring Board and Latch Arm Ref. 26. Used with Cams Refs. 19 and 20, Plate A-1020. (Specify Contact Spring Board required, referring to Refs. B, Ba, Bb, Bc, Bd or Be).....	B-9918-23

PLATE A-1040

UNION SWITCH & SIGNAL CO.

**STYLE "S-8" ELECTRO-MECHANICAL INTERLOCKING
MACHINE DETAIL PARTS
(Continued)**

PUSH BUTTON CIRCUIT CONTROLLERS

Order by Plate, Piece, Reference and Abbreviated Description Given in
Heavy Face Type Only

Piece	Ref.	Description	Drawing Reference
	D	Stick Push Button Circuit Controller, complete with Contact Spring Board and Latch Arm Ref. 36. Used with Cams Refs. 15 and 18, Plate A-1020. (Specify Contact Spring Board required, referring to Refs. B, Ba, Bb, Bc, Bd or Be).....	B-9918-10
70163	2	Push Button, complete with Stud and Pin.....	8114-346
48629	2a	Push Button, only for Ref. 2.....	8235-100
48627	2b	Stud only for Ref. 2.....	8114-346
52512	2c	Pin only for attaching Ref. 2a to Ref. 2b.....	8097-665
70162	3	Latch Arm, complete with Latch, Latch Bearing, Pin, Cotters and Screws for Ref. A.....	B-9918-20
64762	3a	Latch Arm, only for Ref. 3.....	C-8577-71
48591	4	Latch Bearing, only for Refs. 3 and 36.....	C-8156-5
48590	5	Catch only for Refs. 3, 26 and 36.....	C-8156-7
	6	Machine Screw No. 10-30x $\frac{3}{8}$ " Flat Hd. S. for Ref. 5.	
49047	7	Pin, $\frac{5}{16}$ "x $1\frac{21}{32}$ " with two $\frac{1}{8}$ "x $\frac{3}{4}$ " Cotters for Refs. 3, 26 and 36.....	B-10205-1
70096	8	Washer, complete.....	8332-47
26545	9	Hex. Nut for Ref. 2.....	8109-181
48628	10	Button, only.....	8235-99
54929	11	Rivet, only for Ref. 10.....	10301-21
54324	12	Insulation.....	8750-1499
	13	Machine Screw No. 14-24x1" Fil. Hd. Br. for Refs. A, C and D.	

UNION SWITCH & SIGNAL CO.

STYLE "S-8" ELECTRO-MECHANICAL INTERLOCKING
MACHINE DETAIL PARTS
(Continued)

PUSH BUTTON CIRCUIT CONTROLLERS

Order by Plate, Piece, Reference and Abbreviated Description Given in
Heavy Face Type Only

Piece	Ref.	Description	Drawing Reference
84	14	Washer for Ref. 13.....	7828-6
49046	15	Coil Spring.....	7770-263
	16	Machine Screw No. 12-28x $\frac{5}{8}$ " Rd. Hd. S. for attaching Ref. 4 to support.	
53016	17	Terminal Board only.....	9968-311
75151	18	Contact Spring, complete.....	8385-1331
139242	19	Contact Spring, complete.....	8385-2047
52980	20	Contact Spring.....	8385-1396
	21	Terminal Post, complete with one Nut Ref. 23, two Nuts Ref. 24 and two Washers Ref. 25.....	12451
40066	21a	Terminal Post, only for Ref. 21.....	8094-797
	22	Terminal Post, complete with Nut Ref. 23.....	12451
52998	22a	Terminal Post, only for Ref. 22.....	8094-797
29103	23	Hex. Nut.....	8109-194
29101	24	Hex. Nut.....	8109-193
29102	25	Washer.....	7828-139
84620	26	Latch Arm, complete, with Catch, Latch Bearing, Pawl, Spring and Spring Guide for Ref. C.....	B-9918-23
84622	26a	Latch Arm, only for Ref. 26.....	C-8577-53
84623	27	Latch Bearing for Ref. C.....	C-8577-52
	28	Machine Screw No. 12-28x $\frac{1}{2}$ " Rd. Hd. S. for Ref. 27.	

UNION SWITCH & SIGNAL CO.

STYLE "S-8" ELECTRO-MECHANICAL INTERLOCKING
MACHINE DETAIL PARTS
(Continued)

PUSH BUTTON CIRCUIT CONTROLLERS

Order by Plate, Piece, Reference and Abbreviated Description Given in
Heavy Face Type Only

Piece	Ref.	Description	Drawing Reference
54305	29	Pawl for Ref. 26.....	C-8577-11
3914	30	Pin, with two $\frac{1}{16}$ "x $\frac{1}{2}$ " Cotters for Ref. 29.....	8097-12
5511	31	Washer for Ref. 32.....	7828-2
7133	32	Coil Spring for Refs. 26 and 36.....	7770-75
4679	33	Spring Guide for Ref. 26.....	C-5860-5
	34	Rivet, $\frac{1}{8}$ x $\frac{5}{8}$ " Csk. Hd. I. for Ref. 33.	
84686	35	Adj. Screw with Hex. Nut for Ref. 35a.....	8098-507
28978	35a	Hex. Nut for Ref. 35.....	8265-104
84459	36	Latch Arm, complete, with Catch, Latch Bearing, Pawl, Spring and Spring Guide for Ref. D.....	B-9918-10
	37	Machine Screw No. 8-36x $\frac{5}{8}$ " Fil. Hd. S. with Hex. Nut Ref. 35a for Ref. 36.	